



Photocatalytic Air Purifier
flash streamer

Removal of
28 allergens

Removal of
19 adjuvants

Deodorising

Removal of
bacteria



MC707VM-S



MC707VM-S

Flash Streamer Delivers Cleaner Air to Your Rooms

Your Home is constantly being invaded by pollens and vehicle exhaust gases, and no matter how often you clean, mites, mould, and dust pollute the air.



To keep the air in your home as clean as possible, Daikin has developed air purifiers with our new Flash Streamer and photo catalytic technologies for rooms up to 48 m² and an airflow rate. (In the HH mode) up to 420 m³/h.

Large air flow
420 m³/h
In HH mode

Ultra quiet
16dB
In LL mode

Removes viruses
Bio-antibody filter

7 yrs pleated filter
With Titanium Apatite Photocatalyst

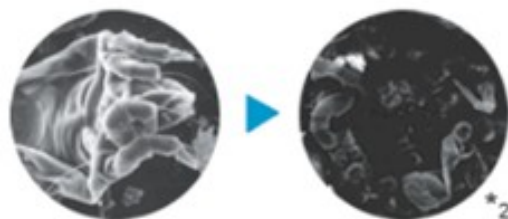
Refreshes your living space
Negative ions

Easy wipe clean
Flat Panel

- Air purifier with streamer discharge for home use (launched in Japan in Aug. 2004).
- After mites were placed on the Flash streamer electrode and irradiated for 15mins. (Photos enlarged with an electron microscope)
- After diesel exhaust particles were placed on the pleated filter and exposed to the Flash Streamer for 16 hours. (Photos enlarged with an electron microscope)

28 Powerfully removes allergens

Allergen (mite)

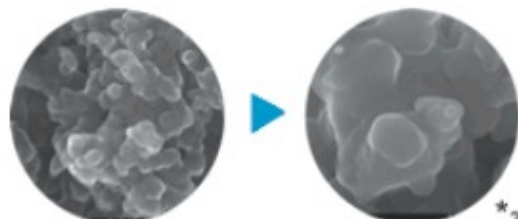


Before exposure

After exposure ^{*2}

19 Powerfully removes adjuvants

Adjuvant (diesel exhaust particles)



Before exposure

After exposure ^{*3}

Powerfully removes odours

Powerfully removes bacteria and viruses

* This product is not intended for medical treatment.

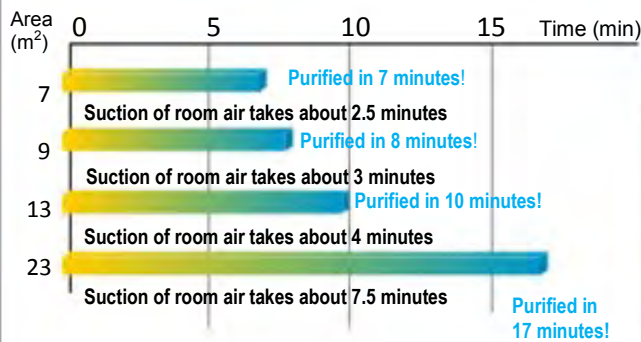
Large Airflow



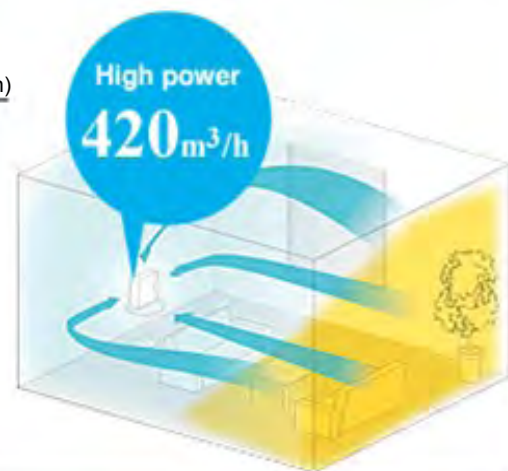
420 m³/h high-power suction

Powerful 4-directional suction is used to reach every corner of the room. Odors, dust, bacteria and formaldehyde are relentlessly sucked in from above, left, right, and front.

Guidelines purification times



Test product: MC707



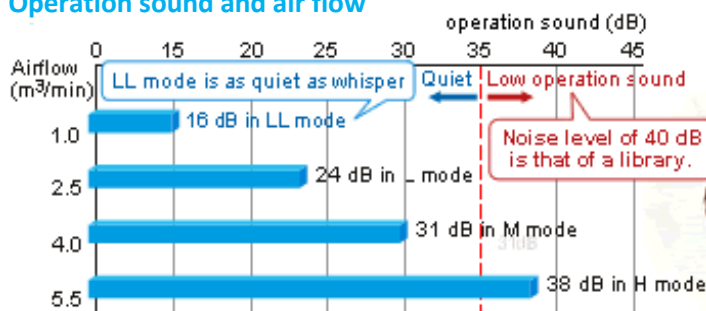
Quiet Operation



As quiet as a whisper (only 16 dB even LL mode)

The quiet operation is achieved by Daikin's original shroud fan and a low-pressure-loss filter.

Operation sound and air flow



Operation sound is kept below 47 dB even at maximum air flow of 420 m³/h. (HH mode).
Test product: MC707.



7 years pleated filter



Replace each year for clean, worry-free operation

Economical: no need to buy filters for 7 years

Since the air purifier comes with 7 filters included, a clean new filter can be installed each year and you still won't need to buy one for 7 years.

Calculation of filter life is based on 10 cigarettes/day being smoked in the room. (Results based on testing carried out in accordance with Japan Electrical Manufacturers Association JEM1467 standard.)

NOTE: The filter is unable to remove all harmful substances such as carbon monoxide found in cigarettesmoke.

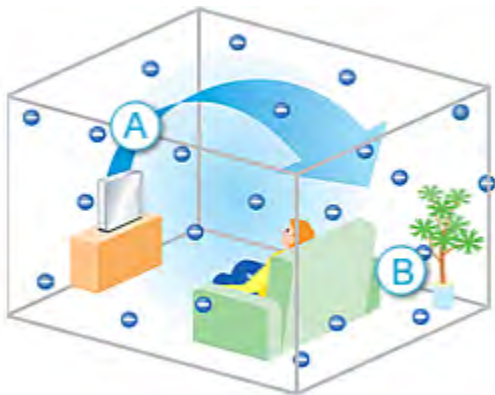
Once-a-year filter replacement is just a guide. Replacement time will differ depending on how the unit is used and where it is located. The replacement period will be shorter if the unit is used in a location where the air is very dirty.



Easy filter Storage!

Unused filters can be stowed neatly inside the unit.

Negative ions



The negative ion mode fills your room with freshened air

Turning on the switch is all it takes to generate negative ions and fill the entire room, every corner, with freshened air.

A One meter from outlet vent
Approx. 300,000 per cc

B Corners of room (approx. 14 m²)
Approx. 10,000 per cc

Test conditions: Turbo mode used in an approx. 14 m² room at 25 °C and RH (Conditions Stipulated by Japan Electrical Manufacturers Association.)

What are negative ions?



Picture is for illustrative purpose only

Typical amounts of negative ions in natural Environments

Forests	2,500 per cc
Waterfalls	10,000 to 18,000 per cc

Positive ions attract atmospheric pollutants, house dust particles, and other harmful airborne matter into interior spaces and keep them there. Negative ions, abundant in natural environments like forests, waterfalls, and the seaside, cancel the effects of positive ions and clean the air.

Designed for Ease-of-Use



Wipe-clean flat panel

The flat surface design makes it easy to keep the panel clean with a quick single wipe of a wet cloth.

Hand-washable catechin prefilter

Just remove, vacuum, and wash with water.

Catechin



Catechin, a bitter-tasting component of plants, is a type of polyphenol. Found in abundance in tea, it possesses antibacterial and antiviral properties and is used in such clothing as underwear and in products such as masks and bedding.



Easy-to-carry handle

Allowing easy lifting with one hand, the handle is convenient for moving the air purifier between rooms.

Remote controller storage space

The remote controller stores neatly in the top of the unit. You'll never have to look for it again.

The 4 Main Merits of the Flash Streamer

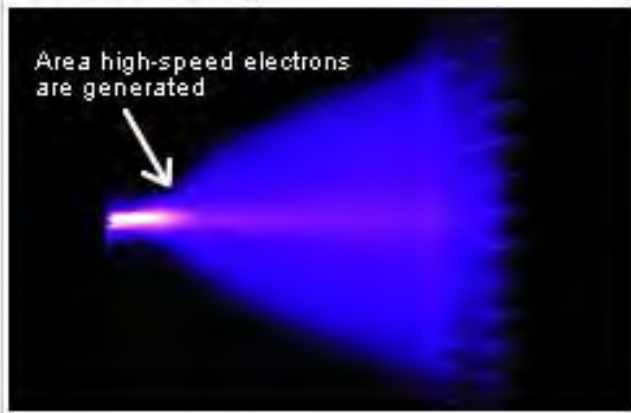
Removal of
28
Allergens

Removal of
19
Adjuvants

Deodorizing

Removal of
Bacteria

Streamer discharge



What is Flash Streamer?

The electro-discharge used in Daikins air purifier, Flash Streamer decomposes (oxidizes) over 1,000 times more than the conventional glow discharge.

*Glow discharge: The most common type of plasma used by a plasma ionizer, etc., for electrostatic dust collection.

	Discharge Shape	Decomposition area	Decomposition (oxidation)
Flash Streamer		Wide	1000 times
Standard Glow Discharge*		Narrow	1 time

Powerful removal of allergens and adjuvants with the amazing Flash Streamer!

4 main merits of the Flash Streamer

Removal of 28 allergens

Removal of 19 adjuvants

Deodorizing

Removal of bacteria

Page 5

Page 6

Page 7

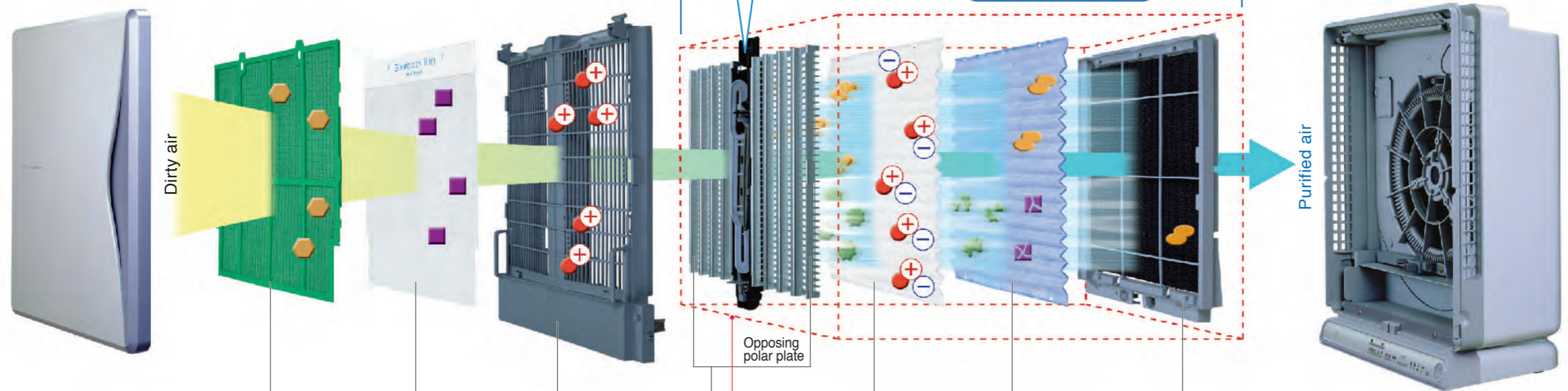
Page 8

4 Flash Streamer unit

The highly effective streamer discharges a stream of high-speed electrons that enable powerful decomposition. Foul odors and adjuvants such as exhaust gas, diesel exhaust particles and VOCs are effectively removed from the air.

Airborne substances like these are broken down and removed.

- Adjuvants (diesel exhaust particles, exhaust gas, VOCs, formaldehyde, etc.)
- Allergens (mite, pollen, mold, etc.), cigarette smoke and micro size dust
- House dust and pet hair
- Bacteria, mold spores, and viruses
- Odors (cigarette, mold and pet odors, etc.)



1 Prefilter (with catechin)

Large dust particles and pet hairs are captured and the bacteria and mold spores attached to them are removed by the catechin component.*1

2 Bio-antibody filter

Airborne viruses are quickly adsorbed by the power of the bio-antibodies and then quickly removed.

3 Plasma ionizer

Dust and pollen are positively charged and then sent to the electrostatic filter.

6 Electrostatic dust collection filter (Front of pleated filter)

Positively charged dust and pollen are adsorbed by the negatively charged filter.

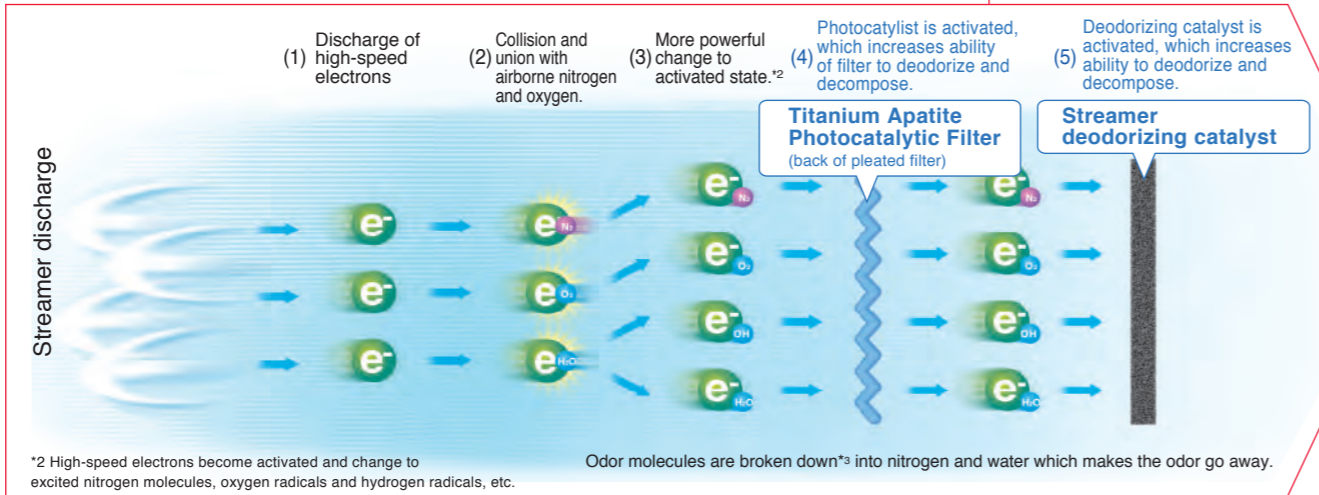
7 Titanium Apatite Photocatalytic Filter (Back of pleated filter)

Odors collected on the front side are broken down. Bacteria, mold spores and viruses are also adsorbed and thoroughly removed.

8 Streamer deodorizing catalyst

Odors are powerfully removed by the synergistic effect of the Flash Streamer. This makes the air even cleaner.

5 How the Flash Streamer works



*2 High-speed electrons become activated and change to excited nitrogen molecules, oxygen radicals and hydrogen radicals, etc.

Odor molecules are broken down*3 into nitrogen and water which makes the odor go away.

* Flash Streamer operation will be accompanied by electro-discharge noise.



Awarded for development of home-use air purifier that uses direct current streamer discharge.

- Powerful removal of 28 allergens.
- Powerful removal also of 19 adjuvants. (diesel exhaust particles, exhaust gas, and VOCs, formaldehyde, etc.)
- Powerful decomposition of odors with Flash Streamer and photocatalyst.
- Removal of bacteria, mold spores, and even viruses.




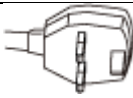
With the Flash Streamer, decomposition by oxidation is **over 1000 times faster than glow discharge.**

The Flash Streamer (streamer discharge) is a type of plasma discharger that is over 1,000 times faster at oxidation decomposition than the commonly used glow discharge method while using the same amount of electrical power.

About the dust collection and deodorizing capacity of air purifiers:
 •All harmful substances in cigarette smoke (carbon monoxide, etc.) cannot be removed.
 •Not all odor components that emanate continuously (building material odors and pet odors, etc.) can be removed.

*1 Evaluation method: antibacterial test. Testing organization: Japan Food Research Laboratories. Test result certificate No. 203041907-003. *3 Acetaldehyde is deodorized by breaking down into water and carbon dioxide.

Specifications

Model	Model MC707VM-S 					Model MC707VM-W 				
Regulation	CE-Marking, WEEE									
Power supply	Single-phase 220-240/220-230 V 50/60 Hz									
Type	Photocatalytic air purifier									
Colour	Silver					White				
Dimensions (H x W x D) mm	533 x 425 x 213									
Weight kg	8.7									
Applicable room area m ²	48									
Mode	HH	H	M	L	LL	HH	H	M	L	LL
Running current	0.48	0.22	0.14	0.10	0.08	0.48	0.22	0.14	0.10	0.08
Rated Power Consumption W	55	23	14	10	8	55	23	14	10	8
Operation sound *1	47	38	31	24	16	47	38	31	24	15
Airflow rate m ³ /h	420	285	180	120	60	420	285	180	120	60
Prefilter	Polypropylen net with catechin									
Dust Collecting method	Plasma ionizer (electro dust collection) + Electrostatic dust collection filter									
Deodorizing Method	Flash streamer + Titanium apatite photocatalytic filter + Deodorizing catalyst									
Bacteria filtering method	Bio-antibody filter + Flash streamer + Titanium apatite photocatalytic filter									
Safety devices	Safety switch (Operation stops when the front panel is open)									
Power cord m	2.0									
Plug shape	 C-TYPE					 BF-TYPE				
Standard accessories	Operation manual, Wireless remote controller, Titanium apatite photocatalytic pleated filter, Bio-antibody filter									

